

Shoppes at McAuley Plaza

4210 W Memorial Rd (N/E Corner McAuley Blvd & W Memorial Rd), Oklahoma City, OK 73134



RETAIL / OFFICE SPACE NOW AVAILABLE

Available SF:	2,000 SF - 3,281 SF
Lease Rate:	\$28.00 psf
Lease Type:	NNN
Building Size:	13,500 SF
Year Built:	2015
Market:	North
Cross Streets:	McAuley and Memorial

FOR MORE INFORMATION, CONTACT

George Williams
gwilliams@pricedwards.com
405.239.1270
210 Park Ave, Suite 700
Oklahoma City, OK 73102
www.pricedwards.com

Phillip Mazaheri, GCIM
pmazaheri@pricedwards.com
405.239.1221
210 Park Ave, Suite 700
Oklahoma City, OK 73102
www.pricedwards.com

Located in a rapidly growing area of northwest Oklahoma City, Shoppes at McAuley Plaza serves several new high income housing additions, mixed use retail/office complexes, and medical facilities.

Mercy Health Center resides across the highway with approximately 300 beds and a recent addition, the Oklahoma Heart Hospital, specializing in heart health care.

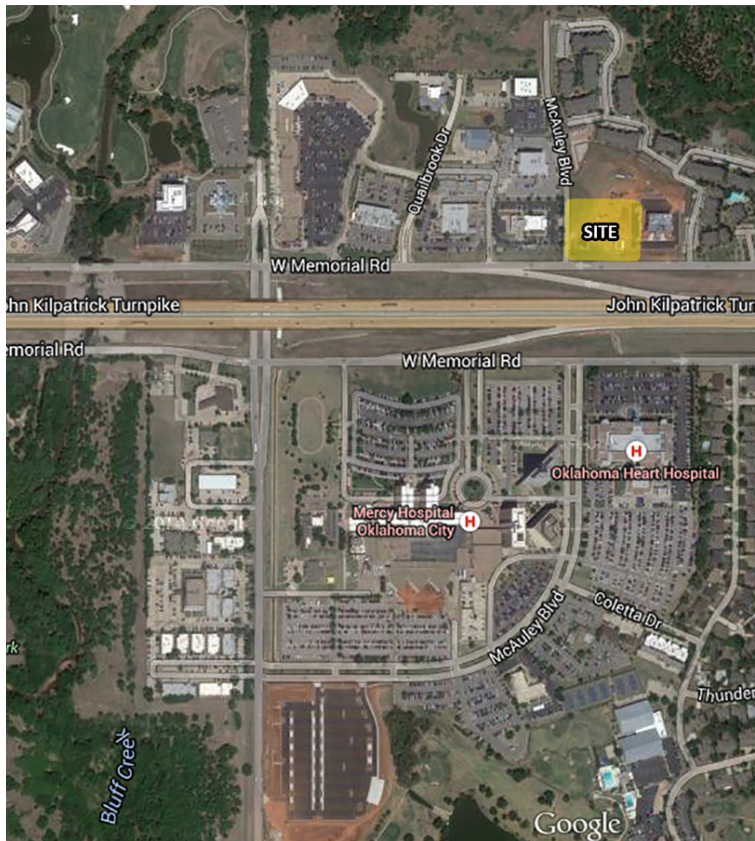
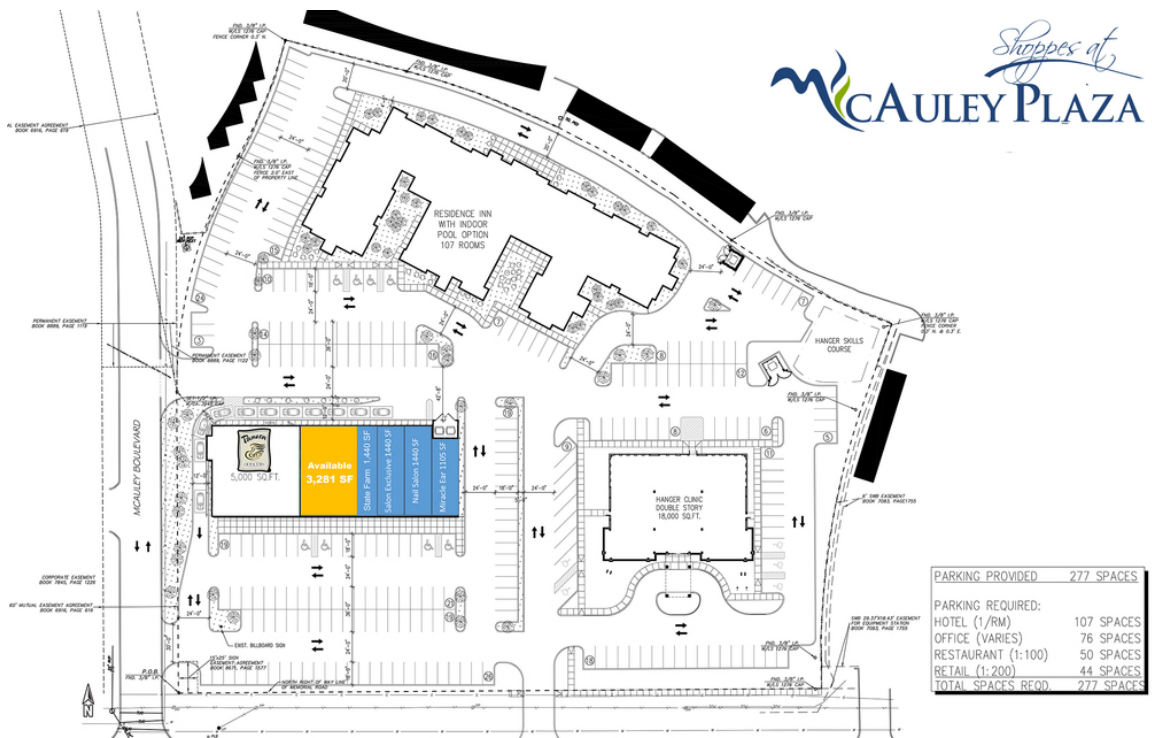
Memorial Corridor Highlights:

- > Oklahoma City was named one of the fastest growing cities in the US by Forbes
- > Northwest Oklahoma City has a desirable housing market that includes many high-end neighborhoods and country clubs as well as a flourishing multifamily housing market.
- > There are over 8,300 apartment units in the Corridor with another 1,000 units proposed or under construction
- > The average family income within a 5 mile radius is \$102,000.
- > The Memorial Corridor boasts over 1.5 million square feet of office space, with over half being Class A properties
- > 1,200 hotel rooms and suites line Memorial Corridor
- > Integris Cancer Center, Mercy Hospital and the Heart Hospital are all within 1.0 mile

010517

Shoppes at McAuley Plaza

4210 W Memorial Rd (N/E Corner McAuley Blvd & W Memorial Rd), Oklahoma City, OK 73134



DEMOGRAPHICS (per 2010 Census; 5 Miles Radius)

Total Population	144,558
Population Density	1,841 Psm
Median Age	36.7
Median Age (Male)	35.2
Median Age (Female)	38.0
Total Households	62,813
# of Persons Per HH	2.3
Average HH Income	\$84,929
Median House Value	\$179,327

TRAFFIC COUNTS (per ACOG)

Memorial Rd	east	22,326
Memorial Rd	west	30,616
John Kilpatrick Turnpike	east	21,357
John Kilpatrick Turnpike	west	27,184

The information above has been obtained from sources believed reliable. While we do not doubt its accuracy, we have not verified it and make no guarantee, warranty, or representation about it. You and your legal and technical advisors should conduct a careful, independent investigation of the property to determine to your satisfaction to the suitability of the property for your needs.